



Olymos

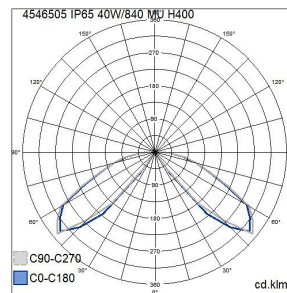
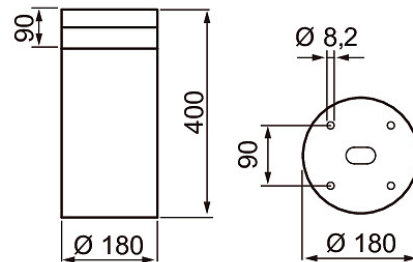
IP65 40W/840 PCC ANT H400

Olymos is a high-quality bollard luminaire for outdoor areas, parks and pathways. The luminaire has a solid structure and high-quality materials, such as an aluminium housing and UV-protected finishing. With its clean-lined design, the luminaire is suitable for many types of environments. The luminaire distributes light evenly in all directions, and comes with several mounting options that facilitate installation in any location. Olymos is available in three sizes.

Olymos Bollard luminaire 40W 4000K 1400lm IP65; IK07; Protection cl. I; LED not exchangeable; CRI>80; Ending; 3x1mm²; Housing al; Colour ant; Cover Plastic, transparent



IP65 40W/840 PCC ANT H400			
PRODUCT CODE	CODE	KG	PRODUCT FAMILY
4546505	A50LYB	3 kg	Olymos



Mounting	
Type of luminaire	Bollard luminaire
Degree of protection (IP)	IP65
Impact strength	IK07
Type of wiring	Ending
Number of poles	3
Conductor cross section (mm ²)	1
Max. number of luminaires per miniature circuit breaker B16	50
Max. number of luminaires per miniature circuit breaker C16	85
Connection type	Other
Connectable conductor cross section (min) (mm ²)	1.5
Connectable conductor cross section (max) (mm ²)	2.5
Quantity of luminaires for MCB C16:	85
Quantity of luminaires for MCB C10:	52
Quantity of luminaires for MCB B16:	50
Quantity of luminaires for MCB B10:	31

Structure	
With base plate	Yes
Lamp type	LED not exchangeable
Light source included	Yes
Suitable for number of lamps	1
Lamp holder	Other
Housing material	Aluminium
Material quality housing material	Other
Surface protection	Powder coating
Housing colour	Anthracite
Cover material	Plastic, transparent
Control gear included	Yes
Exchangeable control gear	Yes
Containing product according to 2019/2020/EU	Yes
Energy efficiency class of light source according to EU regulation 2019/2015	Not required

Dimming and control	
With light sensor	No
With movement sensor	No
Constant luminous flux control	No
Compatible with Apple HomeKit	No
Compatible with Google Assistant	No
Compatible with Amazon Alexa	No
IFTTT support available	No

Photometric data	
Light distributor	Focal lens
Light sharing	Symmetric
Light outlet	Direct
Effective luminous flux (lm)	1400
Rated luminous flux according to IEC 62722-2-1 (min) (lm)	1400
Rated luminous flux according to IEC 62722-2-1 (max) (lm)	1400
Beam angle	Extreme wide beam >80°
Colour of light (alphanumeric)	White
Colour temperature (min) (K)	4000
Colour temperature (max) (K)	4000
Colour rendering index (CRI/Ra)	80-89
Flickering value Pst LM	1
Stroboscope effect value SVM	0.4
Colour temperature switchable	No
Lumen setting adjustable	No
Beam angle adjustable	No

Lifetime and capacity	
Rated life time L70/B50 at 25 °C (h)	100000
Lumen maintenance at median useful life of 50,000 hrs at 25 °C ambient (tq) (%)	95
Lumen maintenance at median useful life of 100,000 hr at 25 °C ambient (tq)	90
Failure rate at median useful life of 50,000 hrs at 25 °C ambient (tq) (%)	5
Failure rate at median useful life of 100,000 hrs at 25 °C ambient (tq)	10

Measurements	
Width (mm)	180
Height/depth (mm)	400
Length (mm)	180
Diameter (mm)	180

Electrotechnical data	
Voltage type	AC
Nominal voltage (min) (V)	220
Nominal voltage (max) (V)	240
Nominal current (min) (mA)	1050
Nominal current (max) (mA)	1050
Type of control gear	LED operating device current-controlled
Protection class according to IEC 61140	I
Suitable for lamp power (min) (W)	40
Suitable for lamp power (max) (W)	40
Maximum system power (W)	40
Luminaire efficacy (lm/W)	35
Power factor	0.9