



Olympos

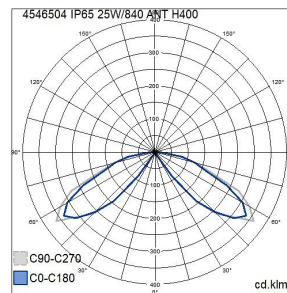
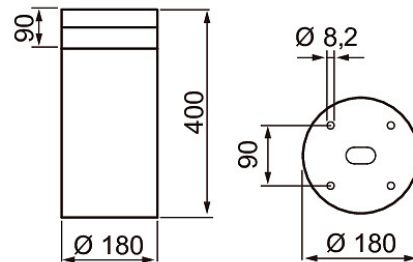
IP65 25W/840 PCC ANT H400

Olympos is a high-quality bollard luminaire for outdoor areas, parks and pathways. The luminaire has a solid structure and high-quality materials, such as an aluminium housing and UV-protected finishing. With its clean-lined design, the luminaire is suitable for many types of environments. The luminaire distributes light evenly in all directions, and comes with several mounting options that facilitate installation in any location. Olympos is available in three sizes.

Olympos Bollard luminaire 25W 4000K 1000lm IP65; IK07; Protection cl. I; LED not exchangeable; CRI>80; Ending; 3x1mm²; Housing al; Colour ant; Cover Plastic, transparent; C16 max. 85



| IP65 25W/840 PCC ANT H400 | | | |
|---------------------------|--------|------|----------------|
| PRODUCT CODE | CODE | KG | PRODUCT FAMILY |
| 4546504 | A5OLYA | 3 kg | Olympos |



| Mounting | |
|--|-------------------|
| Type of luminaire | Bollard luminaire |
| Degree of protection (IP) | IP65 |
| Impact strength | IK07 |
| Type of wiring | Ending |
| Number of poles | 3 |
| Conductor cross section (mm ²) | 1 |
| Max. number of luminaires per miniature circuit breaker B16 | 50 |
| Max. number of luminaires per miniature circuit breaker C16 | 85 |
| Connection type | Other |
| Connectable conductor cross section (min) (mm ²) | 1.5 |
| Connectable conductor cross section (max) (mm ²) | 2.5 |
| Quantity of luminaires for MCB C16: | 85 |
| Quantity of luminaires for MCB C10: | 52 |
| Quantity of luminaires for MCB B16: | 50 |
| Quantity of luminaires for MCB B10: | 31 |

| Structure | |
|--|----------------------|
| With base plate | Yes |
| Lamp type | LED not exchangeable |
| Light source included | Yes |
| Suitable for number of lamps | 1 |
| Lamp holder | Other |
| Housing material | Aluminium |
| Material quality housing material | Other |
| Surface protection | Powder coating |
| Housing colour | Anthracite |
| Cover material | Plastic, transparent |
| Control gear included | Yes |
| Exchangeable control gear | Yes |
| Containing product according to 2019/2020/EU | Yes |
| Energy efficiency class of light source according to EU regulation 2019/2015 | Not required |

| Dimming and control | |
|----------------------------------|----|
| With light sensor | No |
| With movement sensor | No |
| Constant luminous flux control | No |
| Compatible with Apple HomeKit | No |
| Compatible with Google Assistant | No |
| Compatible with Amazon Alexa | No |
| IFTTT support available | No |

| Photometric data | |
|---|------------------------|
| Light distributor | Focal lens |
| Light sharing | Symmetric |
| Light outlet | Direct |
| Effective luminous flux (lm) | 1000 |
| Rated luminous flux according to IEC 62722-2-1 (min) (lm) | 1000 |
| Rated luminous flux according to IEC 62722-2-1 (max) (lm) | 1000 |
| Beam angle | Extreme wide beam >80° |
| Colour of light (alphanumeric) | White |
| Colour temperature (min) (K) | 4000 |
| Colour temperature (max) (K) | 4000 |
| Colour rendering index (CRI/Ra) | 80-89 |
| Flickering value Pst LM | 1 |
| Stroboscope effect value SVM | 0.4 |
| Colour temperature switchable | No |
| Lumen setting adjustable | No |
| Beam angle adjustable | No |

| Lifetime and capacity | |
|---|--------|
| Rated life time L70/B50 at 25 °C (h) | 100000 |
| Lumen maintenance at median useful life of 50,000 hrs at 25 °C ambient (tq) [%] | 95 |
| Lumen maintenance at median useful life of 100,000 hr at 25 °C ambient (tq) | 90 |
| Failure rate at median useful life of 50,000 hrs at 25 °C ambient (tq) [%] | 5 |
| Failure rate at median useful life of 100,000 hrs at 25 °C ambient (tq) | 10 |

| Measurements | |
|-------------------|-----|
| Width (mm) | 180 |
| Height/depth (mm) | 400 |
| Length (mm) | 180 |
| Diameter (mm) | 180 |

| Electrotechnical data | |
|---|---|
| Voltage type | AC |
| Nominal voltage (min) (V) | 220 |
| Nominal voltage (max) (V) | 240 |
| Nominal current (min) (mA) | 500 |
| Nominal current (max) (mA) | 500 |
| Type of control gear | LED operating device current-controlled |
| Protection class according to IEC 61140 | I |
| Suitable for lamp power (min) (W) | 25 |
| Suitable for lamp power (max) (W) | 25 |
| Maximum system power (W) | 25 |
| Luminaire efficacy (lm/W) | 40 |
| Power factor | 0.9 |