

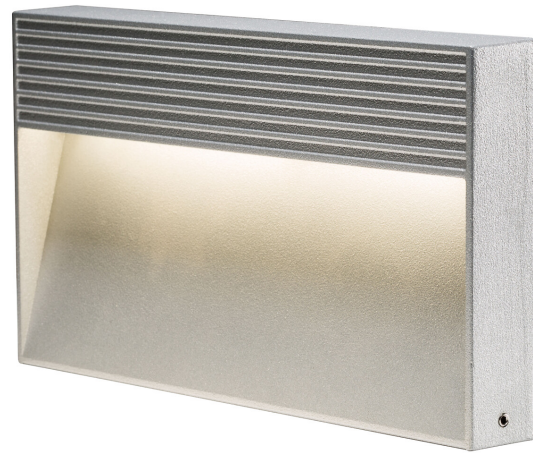


Lid Big

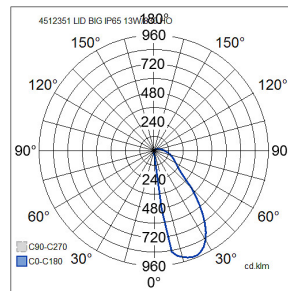
LID BIG 13W/830 SI

A wall-mounted, low-profile luminaire for indoor and outdoor use. Glass diffuser's impact resistance: IK10. Thanks to its elegant design, the Lid luminaire offers an excellent lighting solution for modern spaces and loft apartments. The luminaire comes with an integrated LED, available in two colour temperatures. The luminaire housing is coated with polyester paint that is resistant to corrosion and UV radiation. The screws are made of stainless steel.

Lid Big Outdoors wall luminaire 13W 3000K 360lm No dim; IP65; IK10; Protection cl. I; L70B50 50000h; LED not exchangeable; CRI>80; Ending; 3x1.5mm²; Housing al; Colour sil; Cover Glass opal; C16 max. 84



LID BIG 13W/830 SI			
PRODUCT CODE	CODE	KG	PRODUCT FAMILY
4512351	B5LDBC		Lid Big



Mounting	
Suitable for wall mounting	Yes
Suitable for suspended mounting	No
Suitable for ceiling mounting	No
Suitable for recessed mounting	No
Suitable for surface mounting	Yes
Suitable for light line configuration	No
Suitable for clamp-mounting	No
Fit for workplace acc. EN 12464-1	No
Degree of protection (IP)	IP65
Degree of protection (IP), rear side	Other
Degree of protection (IP), front side	IP65
Max. number of luminaires per miniature circuit breaker C10 (MCB)	58
Max. number of luminaires per miniature circuit breaker B16	56
Max. number of luminaires per miniature circuit breaker C16	84
Impact strength	IK10
Luminaire with limited surface temperature, class "D" in acc. with EN 60598-2-24	No
Suitable for emergency lighting	No
Emergency function monitoring system	None
Type of wiring	Ending
Number of poles	3
Conductor cross section (mm ²)	1.5
Connection type	Screwed terminal
Connectable conductor cross section (min) (mm ²)	1.5
Connectable conductor cross section (max) (mm ²)	1.5
Quantity of luminaires for MCB C16:	84
Quantity of luminaires for MCB C10:	53
Quantity of luminaires for MCB B16:	56
Quantity of luminaires for MCB B10:	35

Structure	
With mounting material	Yes
Lamp type	LED not exchangeable
Light source included	Yes
Suitable for number of lamps	1
Lamp holder	Other
Housing material	Aluminium
Housing surface protection	Powder coating
Housing colour	Silver
Cover material	Glass opal
Control gear included	Yes
Exchangeable control gear	Yes
Energy efficiency class of light source according to EU regulation 2019/2015	E
Containing product according to 2019/2020/EU	Yes
Emergency power supply system	None
Emergency power supply integrated	No
With switch	No
With air slots	No
Filament test according to IEC 60695-2-11	650 °C - 30 s

Dimming and control	
Dimmable	No
Dimming 0-10 V	No
Dimming 1-10 V	No
Dimming DALI	No
Dimming DALI-2	No
Dimming DMX	No
Dimming DSI	No
Dimming LineSwitch	No
Dimming manufacturer's proprietary system	No
Dimming mains voltage modulation	No
Dimming trailing edge	No
Dimming leading edge	No
Dimming programmable	No
Dimming potentiometer (integrated)	No
Dimming RF	No
Dimming Sine Wave Reduction	No
Dimming Touch and Dim	No
Dimming Zigbee	No
Dimming with push-button	No
No dimming function	Yes
With presence indicator	No
With movement sensor	No
With light sensor	No
Constant luminous flux control	No
Bluetooth operated	No
Compatible with Casambi	No
Compatible with Apple HomeKit	No
Compatible with Google Assistant	No
Compatible with Amazon Alexa	No
IFTTT support available	No

Photometric data	
Colour consistency (McAdam ellipse)	SDCM3
Light outlet	Direct
Rated luminous flux according to IEC 62722-2-1 (min) (lm)	360
Rated luminous flux according to IEC 62722-2-1 (max) (lm)	360
Colour of light (alphanumeric)	White
Effective luminous flux (lm)	360
Colour temperature (min) (K)	3000
Colour temperature (max) (K)	3000
Flickering value Pst LM	1
Colour rendering index (CRI/Ra)	80-89
Stroboscope effect value SVM	0.4
Photobiological safety according to EN 62471	RG0
Colour temperature switchable	No
Lumen setting adjustable	No
Beam angle adjustable	No

Lifetime and capacity	
Rated life time L70/B50 at 25 °C (h)	50000
Rated life time L80/B50 at 25 °C	35000
Lumen maintenance at median useful life of 35,000 hrs at 25 °C ambient (tq) (%)	80
Failure rate at median useful life of 35,000 hrs at 25 °C ambient (tq) (%)	5
Failure rate at median useful life of 50,000 hrs at 25 °C ambient (tq) (%)	10
Rated ambient temperature acc. IEC62722-2-1 (min) (°C)	-25
Rated ambient temperature acc. IEC62722-2-1 (max) (°C)	35

Measurements	
Width (mm)	235
Height/depth (mm)	30
Length (mm)	133

Electrotechnical data	
Voltage type	AC
Nominal voltage (min) (V)	220
Nominal voltage (max) (V)	240
Type of control gear	LED operating device current-controlled
Protection class according to IEC 61140	I
Suitable for lamp power (min) (W)	13
Suitable for lamp power (max) (W)	13
Luminaire efficacy (min) (lm/W)	28
Luminaire efficacy (max) (lm/W)	28
Maximum system power (W)	13
Luminaire efficacy (lm/W)	28
Power factor	0.9
Total harmonic distortion (THD) (%)	20
Total harmonic distortion	20