

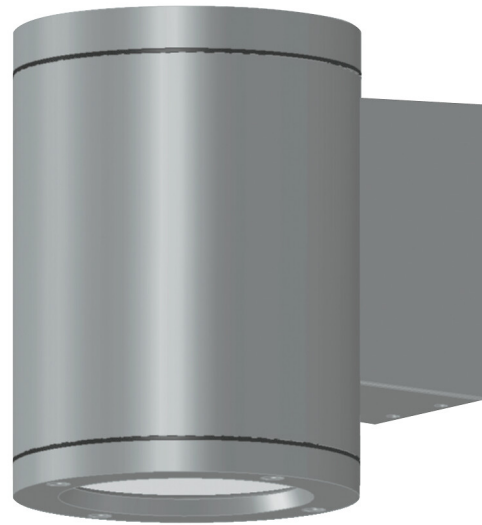


# Blitz M

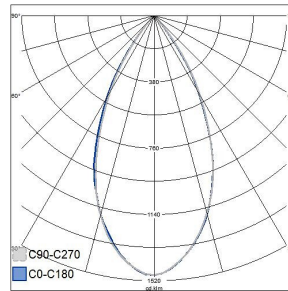
## IP65 16W/840 74D GLC SI

Blitz M is a wall luminaire suitable for indoor and outdoor use. It is equipped with an integrated LED, which distributes light downwards. Available with various beam angles. High-quality surface treatment, stainless steel screws. The luminaire housing is coated with polyester paint that is resistant to corrosion and UV radiation.

Blitz M Outdoors wall luminaire 16W 4000K 1790lm No dim; IP65; IK07; Protection cl. I; L70B50 50000h; LED not exchangeable; CRI>80; SDCM3; Ending; 3x2.5mm<sup>2</sup>; Housing al; Colour sil; Cover Glass transparent; C16 max. 70



| IP65 16W/840 74D GLC SI |        |     |                |
|-------------------------|--------|-----|----------------|
| PRODUCT CODE            | CODE   | KG  | PRODUCT FAMILY |
| 4511512                 | B5BZFB | 3.1 | Blitz M        |



| Mounting   |                  |
|--|------------------|
| Suitable for wall mounting   | Yes              |
| Suitable for suspended mounting  | No               |
| Suitable for ceiling mounting  | No               |
| Suitable for recessed mounting   | No               |
| Suitable for surface mounting  | Yes              |
| Suitable for light line configuration  | No               |
| Suitable for clamp-mounting  | No               |
| Fit for workplace acc. EN 12464-1  | No               |
| Degree of protection (IP)  | IP65             |
| Degree of protection (IP), rear side   | Other            |
| Degree of protection (IP), front side  | IP65             |
| Max. number of luminaires per miniature circuit breaker C10 (MCB)                | 48               |
| Max. number of luminaires per miniature circuit breaker B16                      | 47               |
| Max. number of luminaires per miniature circuit breaker C16                      | 70               |
| Impact strength  | IK07             |
| Luminaire with limited surface temperature, class "D" in acc. with EN 60598-2-24 | No               |
| Suitable for emergency lighting  | No               |
| Emergency function monitoring system   | None             |
| Type of wiring   | Ending           |
| Number of poles  | 3                |
| Conductor cross section (mm <sup>2</sup> )                                       | 2.5              |
| Connection type  | Screwed terminal |
| Connectable conductor cross section (min) (mm <sup>2</sup> )                     | 1.5              |
| Connectable conductor cross section (max) (mm <sup>2</sup> )                     | 2.5              |
| Quantity of luminaires for MCB C16:  | 70               |
| Quantity of luminaires for MCB C10:  | 44               |
| Quantity of luminaires for MCB B16:  | 47               |
| Quantity of luminaires for MCB B10:  | 29               |

| Structure  |                      |
|--|----------------------|
| With mounting material   | Yes                  |
| Lamp type  | LED not exchangeable |
| Light source included  | Yes                  |
| Suitable for number of lamps   | 1                    |
| Lamp holder  | Other                |
| Housing material   | Aluminium            |
| Housing surface protection   | Powder coating       |
| Housing colour   | Silver               |
| Cover material   | Glass transparent    |
| Type of grid   | None                 |
| Control gear included  | Yes                  |
| Exchangeable control gear  | Yes                  |
| Energy efficiency class of light source according to EU regulation 2019/2015 | C                    |
| Containing product according to 2019/2020/EU                                 | Yes                  |
| Emergency power supply system  | None                 |
| Emergency power supply integrated  | No                   |
| With switch  | No                   |
| With air slots   | No                   |
| Filament test according to IEC 60695-2-11                                    | 650 °C - 30 s        |

| Dimming and control                       |     |
|---|-----|
| Dimmable                                  | No  |
| Dimming 0-10 V                            | No  |
| Dimming 1-10 V                            | No  |
| Dimming DALI                              | No  |
| Dimming DALI-2                            | No  |
| Dimming DMX                               | No  |
| Dimming DSI                               | No  |
| Dimming LineSwitch                        | No  |
| Dimming manufacturer's proprietary system | No  |
| Dimming mains voltage modulation          | No  |
| Dimming trailing edge                     | No  |
| Dimming leading edge                      | No  |
| Dimming programmable                      | No  |
| Dimming potentiometer (integrated)        | No  |
| Dimming RF                                | No  |
| Dimming Sine Wave Reduction               | No  |
| Dimming Touch and Dim                     | No  |
| Dimming Zigbee                            | No  |
| Dimming with push-button                  | No  |
| No dimming function                       | Yes |
| With presence indicator                   | No  |
| With movement sensor                      | No  |
| With light sensor                         | No  |
| Constant luminous flux control            | No  |
| Bluetooth operated                        | No  |
| Compatible with Casambi                   | No  |
| Compatible with Apple HomeKit             | No  |
| Compatible with Google Assistant          | No  |
| Compatible with Amazon Alexa              | No  |
| IFTTT support available                   | No  |

| Photometric data  |                     |
|---|---------------------|
| Light distributor   | Reflector           |
| Light sharing   | Symmetric           |
| Beam angle  | Wide beam<br>40-80° |
| Colour consistency (McAdam ellipse)                       | SDCM3               |
| Light outlet  | Direct              |
| Rated luminous flux according to IEC 62722-2-1 (min) (lm) | 1790                |
| Rated luminous flux according to IEC 62722-2-1 (max) (lm) | 1790                |
| Colour of light (alphanumeric)                            | White               |
| Effective luminous flux (lm)                              | 1790                |
| Colour temperature (min) (K)                              | 4000                |
| Colour temperature (max) (K)                              | 4000                |
| Flickering value Pst LM                                   | 1                   |
| Colour rendering index (CRI/Ra)                           | 80-89               |
| Stroboscope effect value SVM                              | 0.4                 |
| Photobiological safety according to EN 62471              | RG0                 |
| Colour temperature switchable                             | No                  |
| Lumen setting adjustable                                  | No                  |
| Beam angle adjustable                                     | No                  |

| Lifetime and capacity   |       |
|---|-------|
| Rated life time L70/B50 at 25 °C (h)  | 50000 |
| Rated life time L80/B50 at 25 °C  | 35000 |
| Lumen maintenance at median useful life of 35,000 hrs at 25 °C ambient (tq) (%) | 80    |
| Lumen maintenance at median useful life of 50,000 hrs at 25 °C ambient (tq) (%) | 70    |
| Failure rate at median useful life of 35,000 hrs at 25 °C ambient (tq) (%)      | 5     |
| Failure rate at median useful life of 50,000 hrs at 25 °C ambient (tq) (%)      | 10    |
| Rated ambient temperature acc. IEC62722-2-1 (min) (°C)                          | -25   |
| Rated ambient temperature acc. IEC62722-2-1 (max) (°C)                          | 25    |

| Measurements        |     |
|---------------------|-----|
| Width (mm)          | 130 |
| Height/depth (mm)   | 130 |
| Length (mm)         | 250 |
| Outer diameter (mm) | 130 |

| Electrotechnical data                   |   |
|---|---|
| Voltage type                            | AC                                      |
| Nominal voltage (min) (V)               | 220                                     |
| Nominal voltage (max) (V)               | 240                                     |
| Nominal current (min) (mA)              | 530                                     |
| Nominal current (max) (mA)              | 530                                     |
| Type of control gear                    | LED operating device current-controlled |
| Protection class according to IEC 61140 | I                                       |
| Suitable for lamp power (min) (W)       | 16                                      |
| Suitable for lamp power (max) (W)       | 16                                      |
| Luminaire efficacy (min) (lm/W)         | 115                                     |
| Luminaire efficacy (max) (lm/W)         | 115                                     |
| Maximum system power (W)                | 16                                      |
| Luminaire efficacy (lm/W)               | 115                                     |
| Power factor                            | 0.9                                     |
| Total harmonic distortion (THD) (%)     | 20                                      |
| Total harmonic distortion               | 20                                      |