

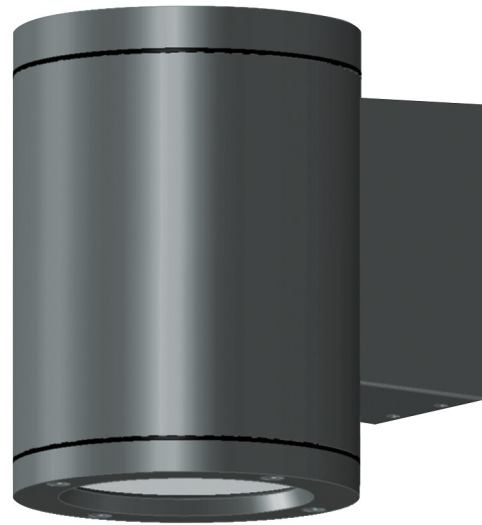


Blitz M

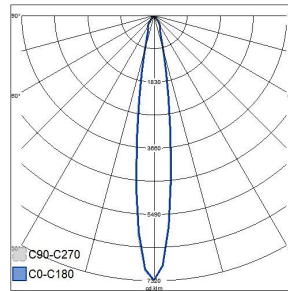
IP65 16W/830 16D GLC ANT

Blitz M is a wall luminaire suitable for indoor and outdoor use. It is equipped with an integrated LED, which distributes light downwards. Available with various beam angles. High-quality surface treatment, stainless steel screws. The luminaire housing is coated with polyester paint that is resistant to corrosion and UV radiation.

Blitz M Outdoors wall luminaire 16W 3000K 1590lm No dim; IP65; IK07; Protection cl. I; L70B50 50000h; LED not exchangeable; CRI>80; SDCM3; Ending; 3x2.5mm²; Housing al; Colour ant; Cover Glass transparent; C16 max. 70



| IP65 16W/830 16D GLC ANT | | | |
|--------------------------|--------|-----|----------------|
| PRODUCT CODE | CODE | KG | PRODUCT FAMILY |
| 4510286 | B5BZAA | 3.1 | Blitz M |



| Mounting | |
|----------------------------------------------------------------------------------|------------------|
| Suitable for wall mounting | Yes |
| Suitable for suspended mounting | No |
| Suitable for ceiling mounting | No |
| Suitable for recessed mounting | No |
| Suitable for surface mounting | Yes |
| Suitable for light line configuration | No |
| Suitable for clamp-mounting | No |
| Fit for workplace acc. EN 12464-1 | No |
| Degree of protection (IP) | IP65 |
| Degree of protection (IP), rear side | Other |
| Degree of protection (IP), front side | IP65 |
| Max. number of luminaires per miniature circuit breaker C10 (MCB) | 48 |
| Max. number of luminaires per miniature circuit breaker B16 | 47 |
| Max. number of luminaires per miniature circuit breaker C16 | 70 |
| Impact strength | IK07 |
| Luminaire with limited surface temperature, class "D" in acc. with EN 60598-2-24 | No |
| Suitable for emergency lighting | No |
| Emergency function monitoring system | None |
| Type of wiring | Ending |
| Number of poles | 3 |
| Conductor cross section (mm ²) | 2.5 |
| Connection type | Screwed terminal |
| Connectable conductor cross section (min) (mm ²) | 1.5 |
| Connectable conductor cross section (max) (mm ²) | 2.5 |
| Quantity of luminaires for MCB C16: | 70 |
| Quantity of luminaires for MCB C10: | 44 |
| Quantity of luminaires for MCB B16: | 47 |
| Quantity of luminaires for MCB B10: | 29 |

| Structure | |
|------------------------------------------------------------------------------|----------------------|
| With mounting material | Yes |
| Lamp type | LED not exchangeable |
| Light source included | Yes |
| Suitable for number of lamps | 1 |
| Lamp holder | Other |
| Housing material | Aluminium |
| Housing surface protection | Powder coating |
| Housing colour | Anthracite |
| Cover material | Glass transparent |
| Type of grid | None |
| Control gear included | Yes |
| Exchangeable control gear | Yes |
| Energy efficiency class of light source according to EU regulation 2019/2015 | C |
| Containing product according to 2019/2020/EU | Yes |
| Emergency power supply system | None |
| Emergency power supply integrated | No |
| With switch | No |
| With air slots | No |
| Filament test according to IEC 60695-2-11 | 650 °C - 30 s |

| Dimming and control | |
|-------------------------------------------|-----|
| Dimmable | No |
| Dimming 0-10 V | No |
| Dimming 1-10 V | No |
| Dimming DALI | No |
| Dimming DALI-2 | No |
| Dimming DMX | No |
| Dimming DSI | No |
| Dimming LineSwitch | No |
| Dimming manufacturer's proprietary system | No |
| Dimming mains voltage modulation | No |
| Dimming trailing edge | No |
| Dimming leading edge | No |
| Dimming programmable | No |
| Dimming potentiometer (integrated) | No |
| Dimming RF | No |
| Dimming Sine Wave Reduction | No |
| Dimming Touch and Dim | No |
| Dimming Zigbee | No |
| Dimming with push-button | No |
| No dimming function | Yes |
| With presence indicator | No |
| With movement sensor | No |
| With light sensor | No |
| Constant luminous flux control | No |
| Bluetooth operated | No |
| Compatible with Casambi | No |
| Compatible with Apple HomeKit | No |
| Compatible with Google Assistant | No |
| Compatible with Amazon Alexa | No |
| IFTTT support available | No |

| Photometric data | |
|-----------------------------------------------------------|-----------------------|
| Light distributor | Reflector |
| Light sharing | Symmetric |
| Beam angle | Narrow beam 10-20° |
| Colour consistency (McAdam ellipse) | SDCM3 |
| Light outlet | Direct |
| Rated luminous flux according to IEC 62722-2-1 (min) (lm) | 1590 |
| Rated luminous flux according to IEC 62722-2-1 (max) (lm) | 1590 |
| Colour of light (alphanumeric) | White |
| Effective luminous flux (lm) | 1590 |
| Colour temperature (min) (K) | 3000 |
| Colour temperature (max) (K) | 3000 |
| Flickering value Pst LM | 1 |
| Colour rendering index (CRI/Ra) | 80-89 |
| Stroboscope effect value SVM | 0.4 |
| Photobiological safety according to EN 62471 | RG0 |
| Colour temperature switchable | No |
| Lumen setting adjustable | No |
| Beam angle adjustable | No |

| Lifetime and capacity | |
|---------------------------------------------------------------------------------|-------|
| Rated life time L70/B50 at 25 °C (h) | 50000 |
| Rated life time L80/B50 at 25 °C | 35000 |
| Lumen maintenance at median useful life of 35,000 hrs at 25 °C ambient (tq) (%) | 80 |
| Lumen maintenance at median useful life of 50,000 hrs at 25 °C ambient (tq) (%) | 70 |
| Failure rate at median useful life of 35,000 hrs at 25 °C ambient (tq) (%) | 5 |
| Failure rate at median useful life of 50,000 hrs at 25 °C ambient (tq) (%) | 10 |
| Rated ambient temperature acc. IEC62722-2-1 (min) (°C) | -25 |
| Rated ambient temperature acc. IEC62722-2-1 (max) (°C) | 25 |

| Measurements | |
|---------------------|-----|
| Width (mm) | 130 |
| Height/depth (mm) | 130 |
| Length (mm) | 250 |
| Outer diameter (mm) | 130 |

| Electrotechnical data | |
|-----------------------------------------|-----------------------------------------|
| Voltage type | AC |
| Nominal voltage (min) (V) | 220 |
| Nominal voltage (max) (V) | 240 |
| Nominal current (min) (mA) | 530 |
| Nominal current (max) (mA) | 530 |
| Type of control gear | LED operating device current-controlled |
| Protection class according to IEC 61140 | I |
| Suitable for lamp power (min) (W) | 16 |
| Suitable for lamp power (max) (W) | 16 |
| Luminaire efficacy (min) (lm/W) | 102 |
| Luminaire efficacy (max) (lm/W) | 102 |
| Maximum system power (W) | 16 |
| Luminaire efficacy (lm/W) | 102 |
| Power factor | 0.9 |
| Total harmonic distortion (THD) (%) | 20 |
| Total harmonic distortion | 20 |