



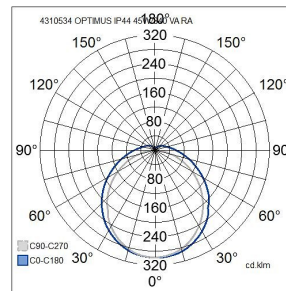
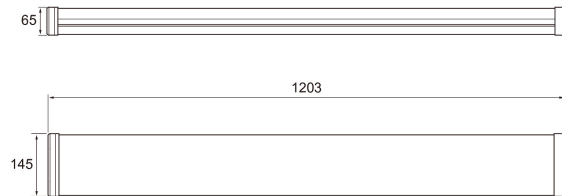
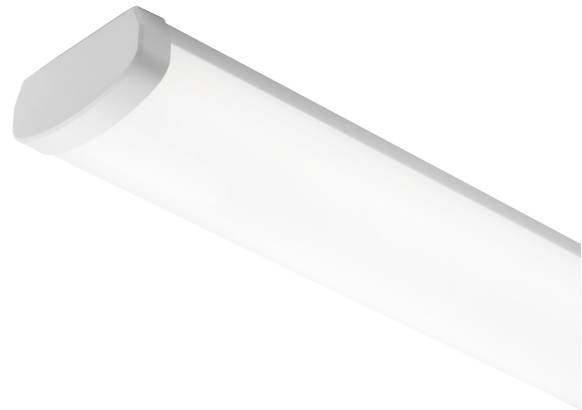
Optimus

IP44 45W/840 RA PCO WH

The low-profile Optimus IP44 luminaire is a versatile lighting solution for industrial facilities, commercial properties, warehouses, corridors and wet spaces. The product is equipped with a keyhole slot for easy installation. It can be mounted on a ceiling, a wall and on a suspension rail. The range consists of two colour temperatures and three lengths. Mounting fixtures designed for population shelters are also available for the product (A20PKD).

Optimus Sensor luminaire 45W 4000K 4500lm Radar On/Off; IP44; IK08; Protection cl. I; L70B50 60000h; LED not exchangeable; CRI>80; SDCM3; Suitable for through wiring; 5x2.5mm²; Housing Steel; Colour wh; Cover Plastic, opal; Movement sensor; C16 max. 24

IP44 45W/840 RA PCO WH			
PRODUCT CODE	CODE	KG	PRODUCT FAMILY
4310534	A2KEAC	2.21	Optimus



Mounting	
Suitable for wall mounting	Yes
Suitable for suspended mounting	No
Suitable for ceiling mounting	Yes
Suitable for recessed mounting	No
Suitable for surface mounting	Yes
Suitable for light line configuration	No
Suitable for clamp-mounting	Yes
Fit for workplace acc. EN 12464-1	No
Degree of protection (IP)	IP44
Degree of protection (IP), rear side	IP44
Degree of protection (IP), front side	IP44
Max. number of luminaires per miniature circuit breaker B16	16
Max. number of luminaires per miniature circuit breaker C16	24
Impact strength	IK08
Luminaire with limited surface temperature, class "D" in acc. with EN 60598-2-24	Yes
Suitable for emergency lighting	No
Type of wiring	Suitable for through wiring
Number of poles	5
Conductor cross section (mm ²)	2.5
Connection type	Screwless terminal
Quantity of luminaires for MCB C16:	24
Quantity of luminaires for MCB C10:	15
Quantity of luminaires for MCB B16:	16
Quantity of luminaires for MCB B10:	10

Structure	
With mounting material	Yes
Lamp type	LED not exchangeable
Light source included	Yes
Suitable for number of lamps	1
Lamp holder	Other
Housing material	Steel
Housing surface protection	Powder coating
Housing colour	White
Cover material	Plastic, opal
Type of grid	White
Control gear included	Yes
Exchangeable control gear	Yes
Energy efficiency class of light source according to EU regulation 2019/2015	E
Containing product according to 2019/2020/EU	Yes
Emergency power supply integrated	No
With switch	No
With air slots	No
Filament test according to IEC 60695-2-11	650 °C - 30 s

Dimming and control	
Dimmable	No
Dimming 0-10 V	No
Dimming 1-10 V	No
Dimming DALI	No
Dimming DALI-2	No
Dimming DMX	No
Dimming DSI	No
Dimming LineSwitch	No
Dimming manufacturer's proprietary system	No
Dimming mains voltage modulation	No
Dimming trailing edge	No
Dimming leading edge	No
Dimming programmable	No
Dimming potentiometer (integrated)	No
Dimming RF	No
Dimming Sine Wave Reduction	No
Dimming Touch and Dim	No
Dimming Zigbee	No
Dimming with push-button	No
No dimming function	Yes
With movement sensor	Yes
With light sensor	Yes
Constant luminous flux control	No
Bluetooth operated	No
Compatible with Casambi	No
Compatible with Apple HomeKit	No
Compatible with Google Assistant	No
Compatible with Amazon Alexa	No
IFTTT support available	No

Photometric data	
Light distributor	None
Light sharing	Symmetric
Beam angle	Open beam
Colour consistency (McAdam ellipse)	SDCM3
Light outlet	Direct
Colour of light (alphanumeric)	White
Effective luminous flux (lm)	4500
Colour temperature (min) (K)	4000
Colour temperature (max) (K)	4000
Colour rendering index (CRI/Ra)	80-89
Photobiological safety according to EN 62471	RG0
Colour temperature switchable	No
Lumen setting adjustable	No
Beam angle adjustable	No

Lifetime and capacity	
Rated life time L70/B50 at 25 °C (h)	60000
Lumen maintenance at median useful life of 35,000 hrs at 25 °C ambient (tq) (%)	95
Lumen maintenance at median useful life of 50,000 hrs at 25 °C ambient (tq) (%)	90
Failure rate at median useful life of 35,000 hrs at 25 °C ambient (tq) (%)	5
Failure rate at median useful life of 50,000 hrs at 25 °C ambient (tq) (%)	10
Rated ambient temperature acc. IEC62722-2-1 (min) (°C)	0
Rated ambient temperature acc. IEC62722-2-1 (max) (°C)	25

Measurements	
Width (mm)	144
Height/depth (mm)	65
Length (mm)	1200

Electrotechnical data	
Voltage type	AC
Nominal voltage (min) (V)	220
Nominal voltage (max) (V)	240
Nominal current (min) (mA)	1200
Nominal current (max) (mA)	1200
Type of control gear	LED operating device current-controlled
Protection class according to IEC 61140	I
Suitable for lamp power (min) (W)	45
Suitable for lamp power (max) (W)	45
Maximum system power (W)	45
Luminaire efficacy (lm/W)	100
Power factor	0.9