

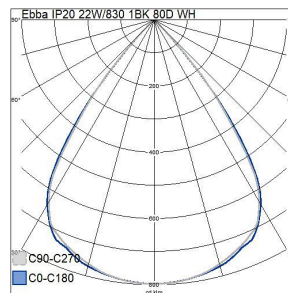
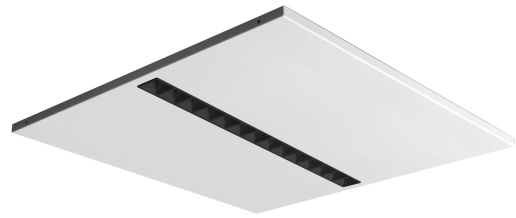


# Ebba

## IP20 22W/830 1BK 80D WH

A modular luminaire with minimalistic design for offices and public spaces. The units blend in seamlessly with the ceiling structure, creating a harmonious appearance thanks to their recessed design and glare-free lens optics. Models equipped with a black reflector (UGR<16) are suitable for workstations. The UGR<19 models with a white reflector are ideal for corridors and waiting areas. Recessed mounting on a T-grid ceiling or, with accessories, on a plasterboard ceiling. Surface mounting too is possible. Housings for recessed and surface mounting are available as accessories.

Ebba Modular luminaire 22W 3000K 2700lm No dim; IP20; Protection cl. I; L70B50 100000h; LED not exchangeable; CRI>80; SDCM3; Suitable for through wiring; 2.5mm<sup>2</sup>; Housing Steel; Colour wh



### IP20 22W/830 1BK 80D WH

PRODUCT CODE	CODE	KG	PRODUCT FAMILY
4245367	D2EBCA	2.2	Ebba

Mounting	
Suitable for wall mounting	No
Suitable for suspended mounting	No
Suitable for ceiling mounting	Yes
Suitable for recessed mounting	Yes
Suitable for surface mounting	Yes
Suitable for light line configuration	No
Suitable for clamp-mounting	No
Fit for workplace acc. EN 12464-1	Yes
Degree of protection (IP)	IP20
Degree of protection (IP), rear side	IP20
Degree of protection (IP), front side	IP20
Max. number of luminaires per miniature circuit breaker C10 (MCB)	83
Max. number of luminaires per miniature circuit breaker B16	80
Max. number of luminaires per miniature circuit breaker C16	136
Luminaire with limited surface temperature, class "D" in acc. with EN 60598-2-24	No
Suitable for emergency lighting	No
Emergency function monitoring system	None
Luminaire may be covered with thermally insulating material	No
Type of wiring	Suitable for through wiring
Number of poles	5
Conductor cross section (mm <sup>2</sup> )	2.5
Connection type	Screwless terminal
Connectable conductor cross section (min) (mm <sup>2</sup> )	1.5
Connectable conductor cross section (max) (mm <sup>2</sup> )	2.5
Quantity of luminaires for MCB C16:	136
Quantity of luminaires for MCB B16:	80

Structure	
With mounting material	Yes
Lamp type	LED not exchangeable
Light source included	Yes
Suitable for number of lamps	1
Lamp holder	Other
Housing material	Steel
Housing surface protection	Powder coating
Housing colour	White
Cover material	Plastic, transparent
Type of grid	High-gloss
Control gear included	Yes
Exchangeable control gear	Yes
Energy efficiency class of light source according to EU regulation 2019/2015	D
Containing product according to 2019/2020/EU	Yes
Emergency power supply system	None
Emergency power supply integrated	No
With switch	No
With air slots	No
Filament test according to IEC 60695-2-11	650 °C - 30 s

Dimming and control	
Dimmable	No
Dimming 0-10 V	No
Dimming 1-10 V	No
Dimming DALI	No
Dimming DALI-2	No
Dimming DMX	No
Dimming DSI	No
Dimming LineSwitch	No
Dimming manufacturer's proprietary system	No
Dimming mains voltage modulation	No
Dimming trailing edge	No
Dimming leading edge	No
Dimming programmable	No
Dimming potentiometer (integrated)	No
Dimming RF	No
Dimming Sine Wave Reduction	No
Dimming Touch and Dim	No
Dimming Zigbee	No
Dimming with push-button	No
No dimming function	Yes
With presence indicator	No
With movement sensor	No
With light sensor	No
Constant luminous flux control	No
Bluetooth operated	No
Compatible with Casambi	No
Compatible with Apple HomeKit	No
Compatible with Google Assistant	No
Compatible with Amazon Alexa	No
IFTTT support available	No

Photometric data	
Light distributor	Focal lens
Light sharing	Symmetric
Beam angle	Wide beam 40-80°
Colour consistency (McAdam ellipse)	SDCM3
Light outlet	Direct
Rated luminous flux according to IEC 62722-2-1 (min) (lm)	2700
Rated luminous flux according to IEC 62722-2-1 (max) (lm)	2700
Colour of light (alphanumeric)	White
Effective luminous flux (lm)	2700
Colour temperature (min) (K)	3000
Colour temperature (max) (K)	3000
Colour rendering index (CRI/Ra)	80-89
Photobiological safety according to EN 62471	RG0
Unified Glare Rating (UGR)	16
Colour temperature switchable	No
Lumen setting adjustable	No
Beam angle adjustable	No

Lifetime and capacity	
Rated life time L70/B50 at 25 °C (h)	100000
Rated life time L80/B50 at 25 °C	80000
Lumen maintenance at median useful life of 35,000 hrs at 25 °C ambient (tq) (%)	90
Lumen maintenance at median useful life of 50,000 hrs at 25 °C ambient (tq) (%)	85
Failure rate at median useful life of 35,000 hrs at 25 °C ambient (tq) (%)	5
Failure rate at median useful life of 50,000 hrs at 25 °C ambient (tq) (%)	5
Rated ambient temperature acc. IEC62722-2-1 (min) (°C)	0
Rated ambient temperature acc. IEC62722-2-1 (max) (°C)	25

Measurements	
Width (mm)	596
Height/depth (mm)	25
Length (mm)	596
Built-in length (mm)	600
Built-in width (mm)	600

Electrotechnical data	
Voltage type	AC
Nominal voltage (min) (V)	220
Nominal voltage (max) (V)	240
Nominal current (min) (mA)	500
Nominal current (max) (mA)	500
Type of control gear	LED operating device current-controlled
Protection class according to IEC 61140	II
Suitable for lamp power (min) (W)	22
Suitable for lamp power (max) (W)	22
Luminaire efficacy (min) (lm/W)	123
Luminaire efficacy (max) (lm/W)	123
Maximum system power (W)	22
Luminaire efficacy (lm/W)	123
Power factor	0.9
Total harmonic distortion (THD) (%)	10
Total harmonic distortion	10