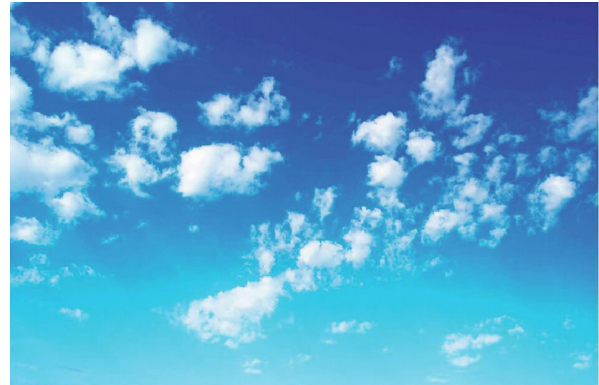




## Plateia Q Sky

### PLATEIA Q SKY 6X34W/SKY04

An eye-catching luminaire range designed for offices, hospitals, restaurants and other public spaces. With this lighting solution, you can create the illusion of a skylight in a space where the level of natural light is low. Available in several patterns. Via special order, the luminaire can be customised with the picture of your choice. There are no restrictions on the number of panels. Recessed mounting on a T-grid ceiling or surface mounting with a separate mounting frame.



Plateia Q Sky Modular luminaire 204W 4000K No dim; IP40; Protection cl. II; L70B50 100000h; LED not exchangeable; CRI>80; SDCM3; Suitable for through wiring; 3x2.5mm<sup>2</sup>; Housing al; Colour wh; Cover Other; C16 max. 32

PLATEIA Q SKY 6X34W/SKY04			
PRODUCT CODE	CODE	KG	PRODUCT FAMILY
4209667	D2PLIQ	5.3	Plateia Q Sky

Mounting	
Suitable for suspended mounting	Yes
Suitable for ceiling mounting	Yes
Suitable for recessed mounting	Yes
Suitable for surface mounting	Yes
Suitable for light line configuration	No
Suitable for clamp-mounting	No
Fit for workplace acc. EN 12464-1	No
Degree of protection (IP)	IP40
Degree of protection (IP), rear side	IP40
Degree of protection (IP), front side	IP40
Max. number of luminaires per miniature circuit breaker B16	29
Max. number of luminaires per miniature circuit breaker C16	49
Luminaire with limited surface temperature, class "D" in acc. with EN 60598-2-24	No
Suitable for emergency lighting	No
Luminaire may be covered with thermally insulating material	No
Type of wiring	Suitable for through wiring
Number of poles	3
Conductor cross section (mm <sup>2</sup> )	2.5
Quantity of luminaires for MCB C16:	49
Quantity of luminaires for MCB B16:	29
Structure	
With mounting material	Yes
Lamp type	LED not exchangeable
Light source included	Yes
Suitable for number of lamps	6
Lamp holder	Other
Housing material	Aluminium
Housing surface protection	Powder coating
Housing colour	White
Cover material	Other
Control gear included	Yes
Exchangeable control gear	Yes
Energy efficiency class of light source according to EU regulation 2019/2015	Not required
Emergency power supply integrated	No
With switch	No
With air slots	No

Dimming and control	
Dimmable	No
Dimming 0-10 V	No
Dimming 1-10 V	No
Dimming DALI	No
Dimming DALI-2	No
Dimming DMX	No
Dimming DSI	No
Dimming LineSwitch	No
Dimming manufacturer's proprietary system	No
Dimming mains voltage modulation	No
Dimming trailing edge	No
Dimming leading edge	No
Dimming programmable	No
Dimming potentiometer (integrated)	No
Dimming RF	No
Dimming Sine Wave Reduction	No
Dimming Touch and Dim	No
Dimming Zigbee	No
Dimming with push-button	No
No dimming function	Yes
With movement sensor	No
With light sensor	No
Constant luminous flux control	No
Bluetooth operated	No
Compatible with Casambi	No
Compatible with Apple HomeKit	No
Compatible with Google Assistant	No
Compatible with Amazon Alexa	No
IFTTT support available	No
Photometric data	
Colour consistency (McAdam ellipse)	SDCM3
Light outlet	Direct
Colour of light (alphanumeric)	White
Colour temperature (min) (K)	4000
Colour temperature (max) (K)	4000
Colour rendering index (CRI/Ra)	80-89
Colour temperature switchable	No
Lumen setting adjustable	No
Beam angle adjustable	No
Lifetime and capacity	
Rated life time L70/B50 at 25 °C (h)	100000
Rated ambient temperature acc. IEC62722-2-1 (min) (°C)	0
Rated ambient temperature acc. IEC62722-2-1 (max) (°C)	25
Measurements	
Width (mm)	596
Height/depth (mm)	12
Length (mm)	596
Electrotechnical data	
Voltage type	AC
Nominal voltage (min) (V)	220
Nominal voltage (max) (V)	240
Type of control gear	LED operating device current-controlled
Protection class according to IEC 61140	II
Suitable for lamp power (min) (W)	34
Suitable for lamp power (max) (W)	34
Maximum system power (W)	34