



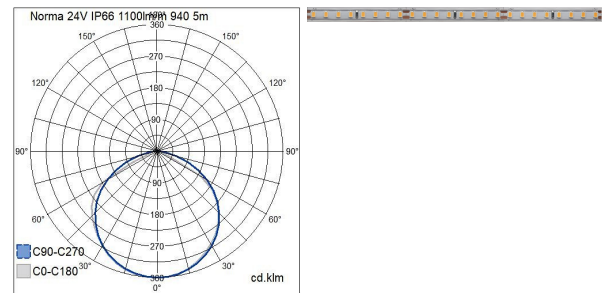
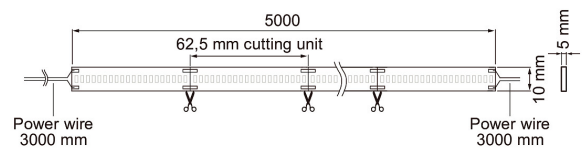
Norma 24V

24V IP66 1100lm/m 940 5m

Norma 24V is a high-quality and energy-efficient LED strip for damp areas, with excellent color rendering. The strip creates a uniform line of light and offers numerous options for implementing indirect lighting. Applications include bathrooms and other damp areas, as well as terraces and balconies. There are two color temperature options available. By selecting the appropriate power supply, you can adjust the dimming of the LED strip as desired. It is also available with Casambi control, cut to length, and installed in a profile if necessary – customization is smoothly carried out at our factory in Lahti. The series includes accessories that make it easy to connect the strips.

Norma 24V Led-strip 48W 9.6W/m wh 4000K IP66; Protection cl. III; L70B50 50000h; LED not exchangeable; CRI>90; Ending; 2x0.3mm². Delivered with 2 pcs closed end caps.

24V IP66 1100lm/m 940 5m			
PRODUCT CODE	CODE	KG	PRODUCT FAMILY
4147020	A1NORB	0.47	Norma 24V



24V IP66 1100lm/m 940 5m

EC002706

Mounting	
Mounting method	Surface mounting
Degree of protection (IP)	IP66
Lowest bending radius (mm)	30
Type of wiring	Ending
Number of poles	2
Conductor cross section (mm ²)	0.3
Connectable conductor cross section (min) (mm ²)	1.5
Connectable conductor cross section (max) (mm ²)	2.5
Connection type	Solder

Structure	
Model	Tape
Lamp type	LED not exchangeable
Number of LEDs per metre	128
Number of nodes per foot	39
Exchangeable control gear	Yes
Energy efficiency class of light source according to EU regulation 2019/2015	E
Length of particular segments (mm)	62.5
With end piece	Yes
With connection set	No
With protective cover	Yes
Self-adhesive	Yes

Dimming and control	
Constant luminous flux control	No
Compatible with Apple HomeKit	No
Compatible with Google Assistant	No
Compatible with Amazon Alexa	No
IFTTT support available	No

Photometric data	
Luminous flux per meter (lm)	1200
Radiation angle (°)	120
Colour of light (alphanumeric)	White
Colour temperature (min) (K)	4000
Colour temperature (max) (K)	4000
Colour rendering index (CRI/Ra)	90-100
Colour temperature switchable	No
Lumen setting adjustable	No
Beam angle adjustable	No

Lifetime and capacity	
Rated life time L70/B50 at 25 °C (h)	50000
Lumen maintenance at median useful life of 50,000 hrs at 25 °C ambient (tq) (%)	70
Failure rate at median useful life of 50,000 hrs at 25 °C ambient (tq) (%)	10

Measurements	
Width (mm)	10
Height/depth (mm)	5
Length (mm)	5000
Total length (m)	5

Electrotechnical data	
Lamp power per meter (W)	9.6
Lamp power per foot (W)	2.9
Luminaire efficacy (lm/W)	125
Voltage type	DC
Lamp voltage (min) (V)	24
Lamp voltage (max) (V)	24
Type of control gear	LED operating device voltage-controlled
Protection class according to IEC 61140	III
Maximum system power (W)	48
Power factor	1