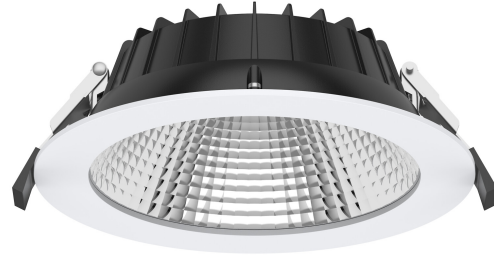




150 IP54 14W 3CCT DA2 SI WH

Compact XL is a versatile and high-quality downlight family that provides evenly distributed light. The range is designed for public spaces such as lobbies and corridors, as well as particularly for offices and educational facilities. The luminaire is also well suited for renovation projects. The family includes luminaires in several sizes as well as a PIR version. The luminaires are designed to minimise glare, with a UGR value below 19. Multiple options are available for output and colour temperature. The luminaires are highly energy-efficient, offer a long lifetime, and deliver excellent lm/W performance. The accessory range is particularly extensive, enabling flexible lighting solutions tailored to project requirements. The trim is available in three standard colours and can also be customised project-specifically according to the RAL Classic colour chart. The reflector is available in four different colours. Adapter frames are also available as accessories, allowing the luminaires to be fitted into larger cut-out openings.

Compact XL Downlight 8W-14W 3000/3500/4000K
1150-1800lm Medium beam 20-40°; Dimming DALI-2;
Push-button dim; IP54; IK03; SC II; L70B50 100000h;
CRI>80; SDCM3; Suitable for loop-in wiring;
5x2.5mm²; Housing aluminium; Colour white; Cover
transparent plastic; C16 maks. 45



150 IP54 14W 3CCT DA2 SI WH

PRODUCT CODE	CODE	KG	PRODUCT FAMILY
100208	100208		

Mounting	
Suitable for surface mounting	No
Suitable for recessed mounting	Yes
Suitable for wall mounting	No
Suitable for suspended mounting	No
Suitable for ceiling mounting	Yes
Suitable for traverse mounting	No
Suitable for pedestal/floor mounting	No
Suitable for light-track mounting	No
Suitable for clamp-mounting	No
Suitable for low voltage cable system	No
Degree of protection (IP)	IP54
Degree of protection (IP), rear side	IP20
Degree of protection (IP), front side	IP54
Impact strength	IK03
Emergency function monitoring system	None
Type of wiring	Suitable for through wiring
Number of poles	5
Conductor cross section (mm ²)	2.5
Connectable conductor cross section (min) (mm ²)	1.5
Connectable conductor cross section (max) (mm ²)	2.5
Connection type	Crimping
Luminaire with limited surface temperature, class "D" in acc. with EN 60598-2-24	Yes
Max. number of luminaires per miniature circuit breaker B16	27
Max. number of luminaires per miniature circuit breaker C16	45
Fit for workplace acc. EN 12464-1	Yes
Luminaire may be covered with thermally insulating material	No
Quantity of luminaires for MCB C16:	45
Quantity of luminaires for MCB C10:	28
Quantity of luminaires for MCB B16:	27
Quantity of luminaires for MCB B10:	17

Structure	
Adjustability	Not adjustable
Lamp type	LED not exchangeable
Light source included	Yes
Suitable for number of lamps	1
Lamp holder	Other
Housing material	Aluminium
Surface protection	Powder coating
Housing colour	White
Cover material	Plastic, transparent
Surface brushed	No
Control gear included	Yes
Exchangeable control gear	Yes
Reflector	Matt
Reflector colour	Silver
Energy efficiency class of light source according to EU regulation 2019/2015	D
Containing product according to 2019/2020/EU	Yes
Emergency power supply system	None
Emergency power supply integrated	No
Filament test according to IEC 60695-2-11	650 °C - 30 s

Dimming and control	
With movement sensor	No
With presence indicator	No
With light sensor	No
Dimmable	Yes
Dimming 0-10 V	No
Dimming 1-10 V	No
Dimming DALI-2	Yes
Dimming DALI	Yes
Dimming DMX	No
Dimming DSI	No
Dimming potentiometer (integrated)	No
Dimming LineSwitch	No
Dimming manufacturer's proprietary system	No
Dimming mains voltage modulation	No
Dimming trailing edge	No
Dimming leading edge	No
Dimming programmable	Yes
Dimming RF	No
Dimming Sine Wave Reduction	No
Dimming Touch and Dim	No
Dimming Zigbee	No
Dimming with push-button	Yes
No dimming function	No
Constant luminous flux control	No
IFTTT support available	No
Compatible with Apple HomeKit	No
Bluetooth operated	No
Compatible with Google Assistant	No
Compatible with Casambi	No
Compatible with Amazon Alexa	No

Photometric data	
Light distributor	Reflector
Light sharing	Symmetric
Beam angle	Medium beam 20-40°
Light outlet	Direct
Colour of light (alphanumeric)	White
Colour temperature (min) (K)	3000
Colour temperature (max) (K)	4000
Colour temperature switchable	Discrete positions
Colour rendering index (CRI/Ra)	80-89
Luminous flux (min) (lm)	1150
Luminous flux (max) (lm)	1800
Effective luminous flux (lm)	1800
Rated luminous flux according to IEC 62722-2-1 (min) (lm)	1150
Rated luminous flux according to IEC 62722-2-1 (max) (lm)	1800
Lumen setting adjustable	Positions
Flickering value Pst LM	1
Beam angle adjustable	No
Stroboscope effect value SVM	0.4
Photobiological safety according to EN 62471	RG0
Colour consistency (McAdam ellipse)	SDCM3
Unified Glare Rating (UGR)	19

Lifetime and capacity	
Rated life time L70/B50 at 25 °C (h)	100000
Rated life time L80/B50 at 25 °C	75000
Lumen maintenance at median useful life of 35,000 hrs at 25 °C ambient (tq) (%)	95
Lumen maintenance at median useful life of 50,000 hrs at 25 °C ambient (tq) (%)	90
Lumen maintenance at median useful life of 100,000 hr at 25 °C ambient (tq)	80
Failure rate at median useful life of 35,000 hrs at 25 °C ambient (tq) (%)	5
Failure rate at median useful life of 50,000 hrs at 25 °C ambient (tq) (%)	5
Failure rate at median useful life of 100,000 hrs at 25 °C ambient (tq)	10
Rated ambient temperature acc. IEC62722-2-1 (min) (°C)	0
Rated ambient temperature acc. IEC62722-2-1 (max) (°C)	25

Measurements	
Length (mm)	170
Width (mm)	170
Height/depth (mm)	58
Outer diameter (mm)	170
Built-in length (mm)	56
Built-in width (mm)	150
Built-in height/depth (mm)	150
Installation height (min) (mm)	2000
Installation height (max) (mm)	5000
Recess diameter (min) (mm)	140
Recess diameter (max) (mm)	150

Electrotechnical data	
Voltage type	AC
Nominal voltage (min) (V)	220
Nominal voltage (max) (V)	240
Nominal current (min) (mA)	200
Nominal current (max) (mA)	350
Type of control gear	LED operating device current-controlled
Total harmonic distortion (THD) (%)	10
Total harmonic distortion	10
Protection class according to IEC 61140	II
Suitable for lamp power (min) (W)	8
Suitable for lamp power (max) (W)	14
Maximum system power (W)	14
Luminaire efficacy (min) (lm/W)	150
Luminaire efficacy (max) (lm/W)	150
Power factor	0.9
Luminaire efficacy (lm/W)	150